



Caledonian

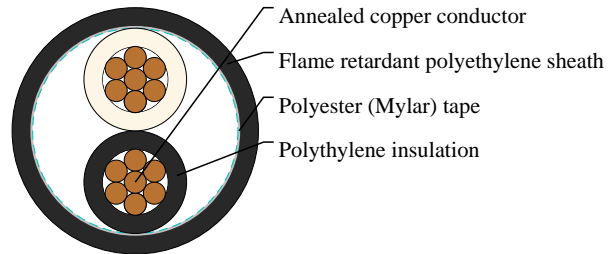
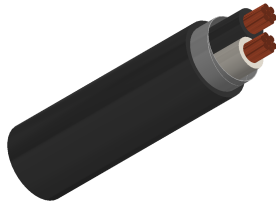
JIS Industrial Cables

www.caledonian-cables.com

marketing@caledonian-cables.com

JIS C 3401 Cables

CEE/F(EM-CEE) 2C22



APPLICATIONS

For supervisory electrical equipment, station control circuits, outdoor, suitable installation in dry or wet cable trenches.

CABLE CONSTRUCTION

Conductor: Circular or compacted circular stranded annealed copper wires

Separator: A proper separator may be applied to a conductor

Insulation: Polyethylene

Filler: Non-hygroscopic material(optional)

Binding tape: Polyester (Mylar) tape (optional)

Sheath: Flame retardant polyethylene, Black color

Name Code:

C: For control E: Polyethylene E: Polyethylene /F: Flame retardant

COLOUR CODE

2 cores- Black and white

PHYSICAL AND THERMAL PROPERTIES

Maximum conductor temperature 90°C

Circuit voltage not exceeding 600 volts

Test voltage 2000 volts

DIMENSION AND PARAMETERS

No. of Cores	Nominal Cross-sectional Area	No. and Dia. of Wires	Conductor Diameter	Nominal Insulation Thickness	Nominal Sheath Thickness	Approx. Overall Diameter	Approx. Weight	Max. DC Resistance at 20°C
	mm ²	no./mm	mm	mm	mm	mm	kg/km	Ω/km
2	22	7/2	6	1.2	1.6	21	650	0.84